



GUILDCREST ESTATES



5 White House Farm Court Easole Street, Nonington, Dover CT15 4NJ





GUILDCREST ESTATES

Easole Street, Nonington, Dover
CT15 4NJ

Guide price £325,000

*****GUIDE PRICE £325,000 - £350,000*****

Located in the charming village of Nonington, this delightful three bedroom barn conversion offers a unique blend of character and modern living. The property is situated on Easole Street, within a lovely small community that enhances the appeal of village life.

As you enter, you will be greeted by the distinctive features that make this home truly special. The mezzanine on the top floor provides an airy and spacious feel, perfect for relaxation or as a creative space. Each bedroom is thoughtfully designed, ensuring comfort and warmth throughout.

The property boasts a garage, providing ample storage or parking space, while the easy to maintain rear garden offers a tranquil outdoor retreat, ideal for enjoying sunny afternoons or hosting gatherings with friends and family.

With communal parking available, convenience is at your doorstep. This barn conversion is not just a house, it is a home filled with character, set in a picturesque village that invites a sense of community and belonging. If you are seeking a property that combines charm with practicality, this is an opportunity not to be missed.






VIRTUALLY
STAGED®




VIRTUALLY
STAGED®



Kitchen

9'7 x 7'1 (2.92 x 2.17)

Dining Room

26'0 x 12'8 (7.93 x 3.85)

Living Room

26'1 x 16'0 (7.94 x 4.88)

Mezzanine

11'0 x 9'1 (3.35 x 2.76)

Bedroom 3

14'11 x 11'11 (4.54 x 3.64)

Bedroom 1

13'11 x 11'7 (4.23 x 3.54)

Bedroom 2

13'11 x 8'4 (4.23 x 2.55)

Bathroom

Hallway

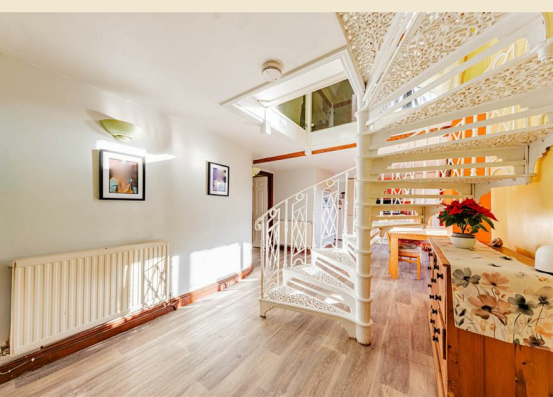
Rear Garden

Garage

18'11 x 9'1 (5.76 x 2.76)




VIRTUALLY
STAGED®





GUILDCREST ESTATES

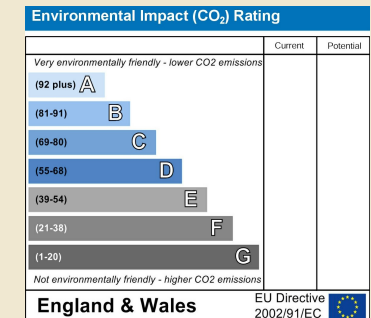
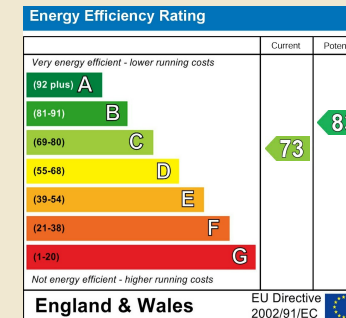
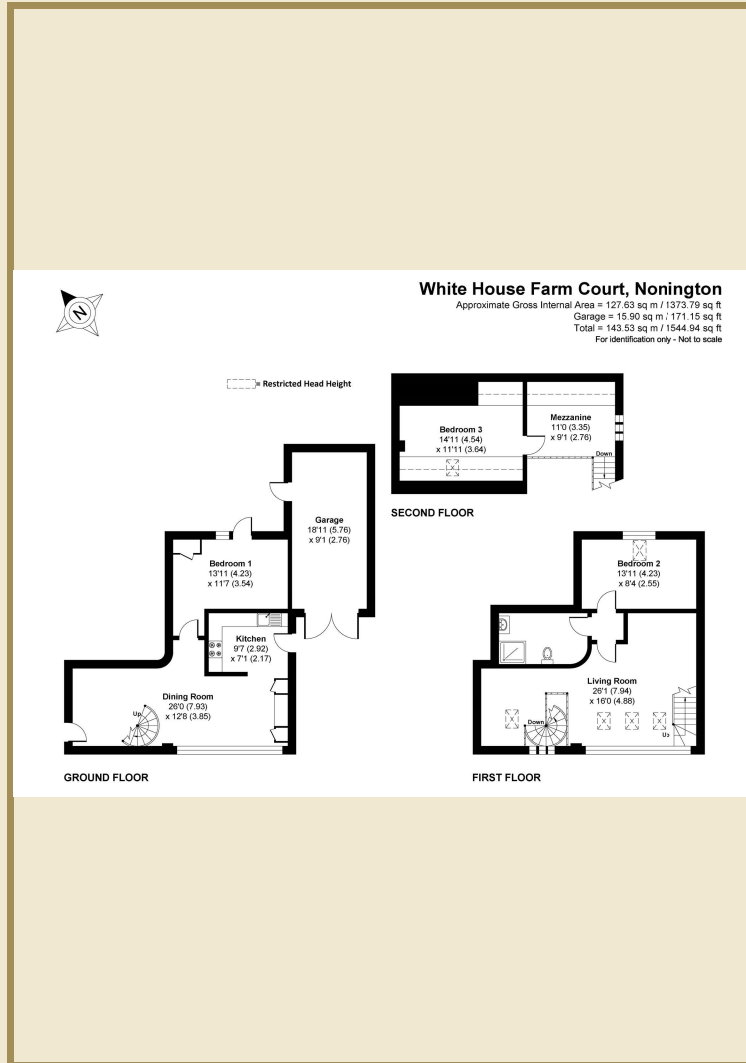
Key Features

- 3 bedroom barn conversion
- Quirky character throughout
- Mezzanine with lots of charm
- Easy maintained rear garden
- Garage for secure parking
- Lovely village community
- Communal parking available
- Located in Easole Street
- Near Nonington, Dover
- Viewing highly recommended

Important Information

Freehold
House - Terraced
1373.00 sq ft
Council Tax Band
EPC Rating C

£325,000



01227 696000 www.guildcrestestates.co.uk

24 Lower Bridge Street, Canterbury, Kent CT1 2LG



Disclaimer These particulars, whilst believed to be accurate are set out as a general outline only for guidance and do not constitute any part of an offer or contract. Intending purchasers should not rely on them as statements of representation of fact, but must satisfy themselves by inspection or otherwise as to their accuracy. No person in this firm's employment has the authority to make or give any representation or warranty in respect of the property.